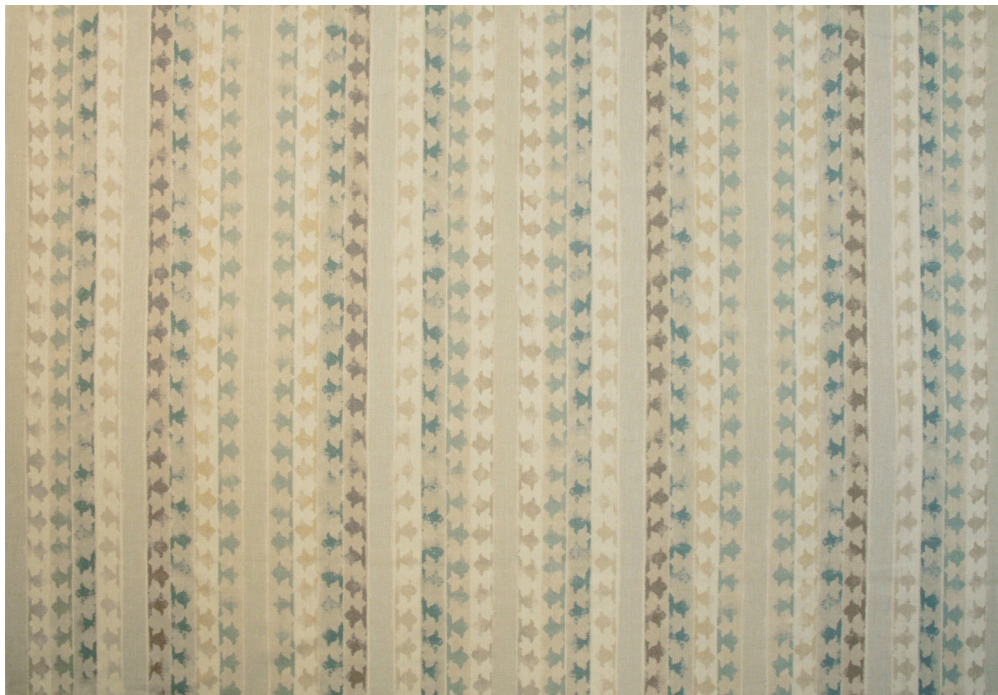


# MADEAUX BY RICHARD SMITH



## JAHAN 01 - BLUE ON ECRU

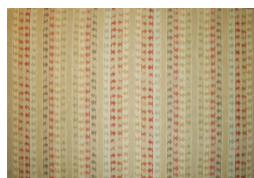
The recurring border used here as stripes is a classic design motif. The scale, versatile linen and cotton ground and variety of shades within both the red and the blue colourways make for a very useable fabric.

Material: 55% Linen/45% Cotton Printed in England

53.5"/136cm Printed Width

Repeat 28.5"/67cm V x 25.5"/67cm W

ALSO AVAILABLE IN THE FOLLOWING COLOURWAYS



02 - RED ON ECRU

[www.madeaux.com](http://www.madeaux.com)

   @madeauxhome

# MADEAUX BY RICHARD SMITH



## JAHAN 02 - RED ON ECRU

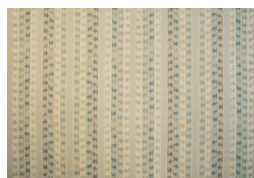
The recurring border used here as stripes is a classic design motif. The scale, versatile linen and cotton ground and variety of shades within both the red and the blue colourways make for a very useable fabric.

Material: 55% Linen/45% Cotton Printed in England

53.5"/136cm Printed Width

Repeat 28.5"/67cm V x 25.5"/67cm W

ALSO AVAILABLE IN THE FOLLOWING COLOURWAYS



01 - BLUE ON ECRU

[www.madeaux.com](http://www.madeaux.com)

