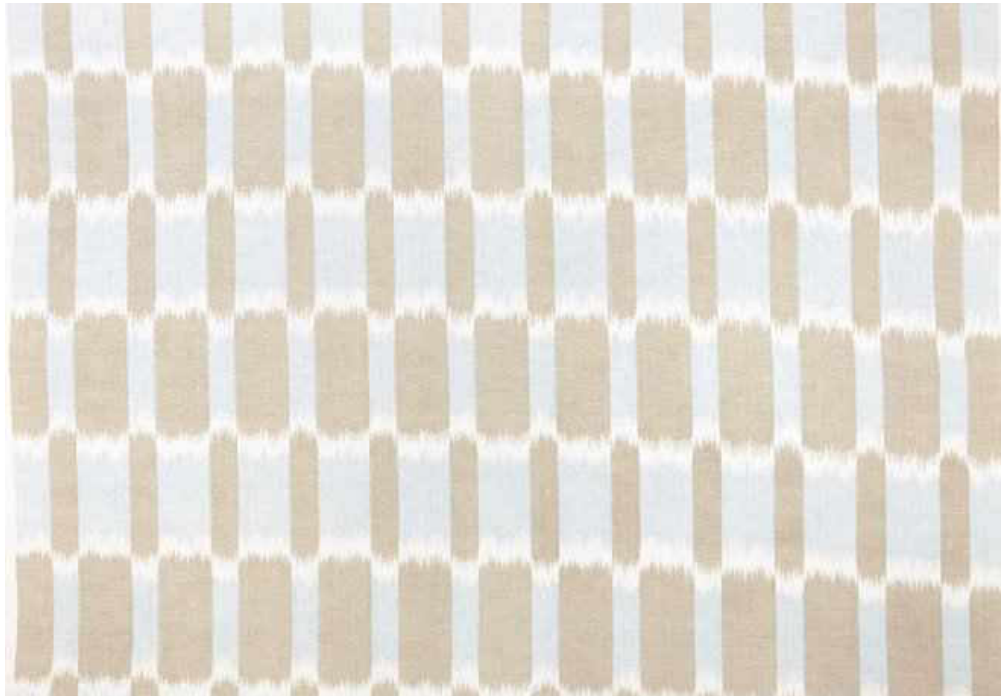


MADEAUX BY RICHARD SMITH



CHAUPUR 01 - PIGEON/FAWN

This is an authentic warp print, in which the vertical cotton yarns of the fabric are hand printed before being hand woven with the horizontal linen yarns. This gives the distinctive halo effect which combines beautifully with the geometric design.

Material: 55% Linen/45% Cotton Hand Printed and Woven in India

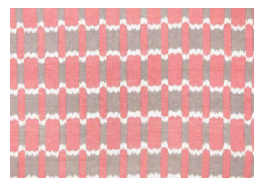
Printed Width: 54"/137cm

Repeat 13"/33.5cm V x 8.5"/21.5cm W

ALSO AVAILABLE IN THE FOLLOWING COLOURWAYS



02 - LETTUCE/BLUE

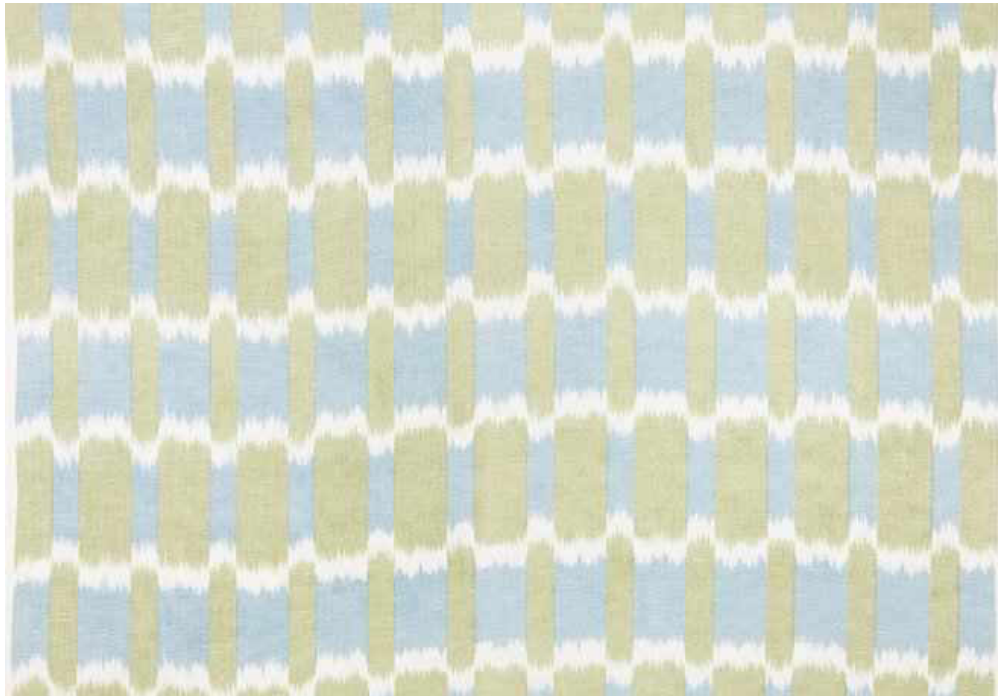


03 - RED/UMBER

www.madeaux.com

   @madeauxhome

MADEAUX BY RICHARD SMITH



CHAUPUR 02 - LETTUCE/BLUE

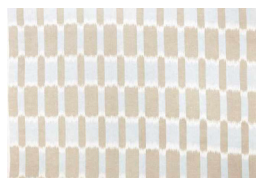
This is an authentic warp print, in which the vertical cotton yarns of the fabric are hand printed before being hand woven with the horizontal linen yarns. This gives the distinctive halo effect which combines beautifully with the geometric design.

Material: 55% Linen/45% Cotton Hand Printed and Woven in India

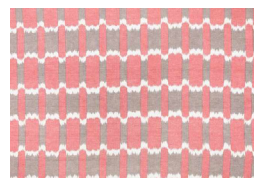
Printed Width: 54"/137cm

Repeat 13"/33.5cm V x 8.5"/21.5cm W

ALSO AVAILABLE IN THE FOLLOWING COLOURWAYS



01 - PIGEON/FAWN

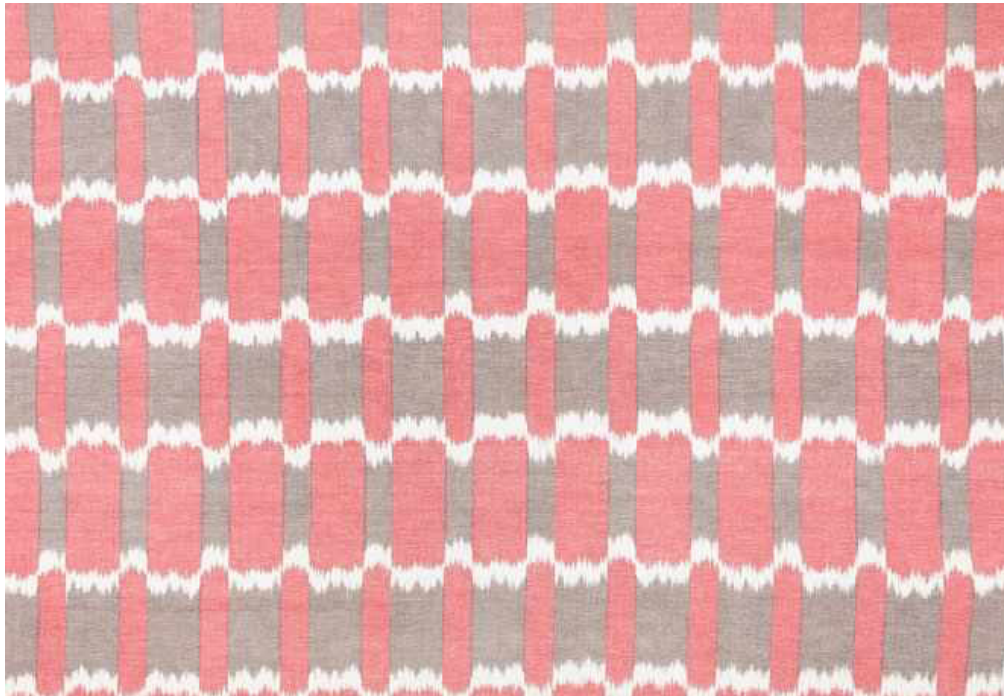


03 - RED/UMBER

www.madeaux.com

   @madeauxhome

MADEAUX BY RICHARD SMITH



CHAUPUR 03 - RED/UMBER

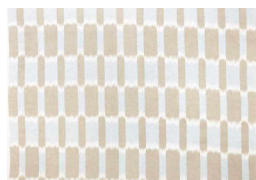
This is an authentic warp print, in which the vertical cotton yarns of the fabric are hand printed before being hand woven with the horizontal linen yarns. This gives the distinctive halo effect which combines beautifully with the geometric design.

Material: 55% Linen/45% Cotton Hand Printed and Woven in India

Printed Width: 54"/137cm

Repeat 13"/33.5cm V x 8.5"/21.5cm W

ALSO AVAILABLE IN THE FOLLOWING COLOURWAYS



01 - PIGEON/FAWN



02 - LETTUCE/BLUE

www.madeaux.com

   @madeauxhome